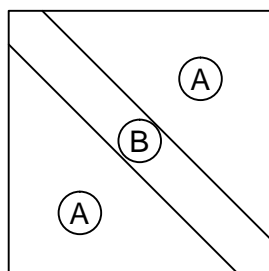
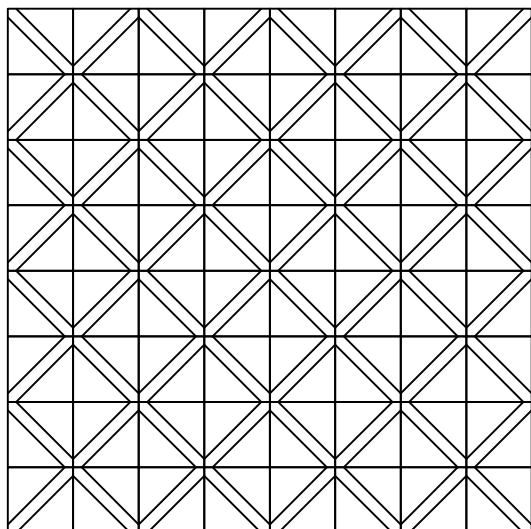


SFQG Community Outreach Pattern



Scrappity-Do-Dah

Quilt Size: 40"x40"

Fabric Required:

- A: (64) 6" blocks
- B: (64) 1½" X 10" rectangles
- Backing & Batting: 46" X 46"
- Binding: 175"

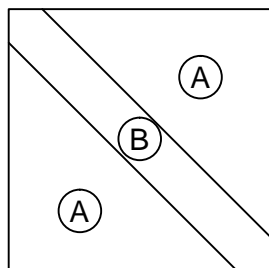
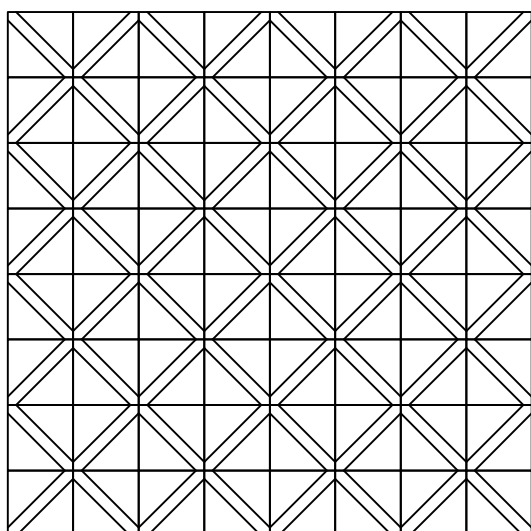
Assembly:

- Cut 6" blocks in half diagonally
- Sew 1 rectangle to each side of cut
- Press seams
- Square up to 6"
- Sew 4 blocks together to create an X
- Square up to 10½"
- Sew the blocks together 4 to a row
- Sew the rows together to make 4 rows.
- Press the finished top.

Quilting:

- Machine quilt a maximum of 4" apart.

SFQG Community Outreach Pattern



Scrappity-Do-Dah

Quilt Size: 40"x40"

Fabric Required:

- A: (64) 6" blocks
- B: (64) 1½" X 10" rectangles
- Backing & Batting: 46" X 46"
- Binding: 175"

Assembly:

- Cut 6" blocks in half diagonally
- Sew 1 rectangle to each side of cut
- Press seams
- Square up to 6"
- Sew 4 blocks together to create an X
- Square up to 10½"
- Sew the blocks together 4 to a row
- Sew the rows together to make 4 rows.
- Press the finished top.

Quilting:

- Machine quilt a maximum of 4" apart.