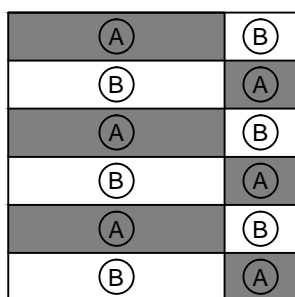
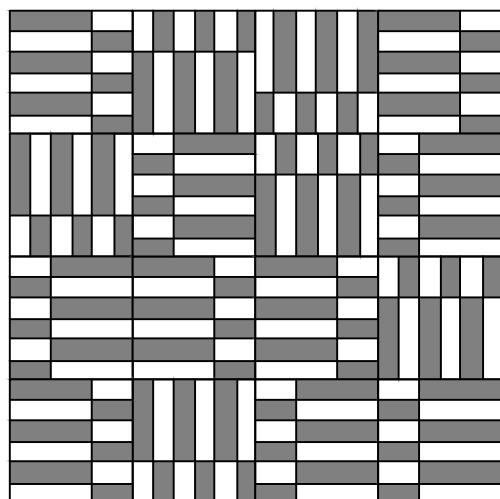


SFQG Community Outreach Pattern



Garden Gate - Quilt Size: 48" X 48"

Fabric Required:

- A: (18) 2½"x39" strips of a medium or dark fabric
- B: (18) 2½"x39" strips of a light fabric
- Backing & Batting: 54" X 54"
- Binding: 207"

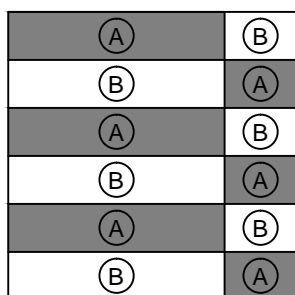
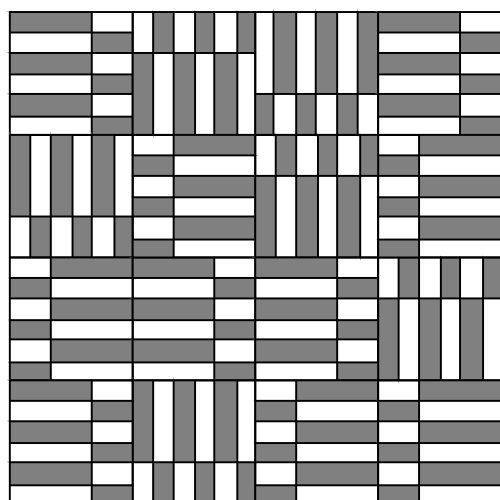
Assembly:

- Sew (6) strips of A to B alternating colors
- Press. This should be 12½" wide and at least 39" long
- Cut this into (3) 9½" rectangles and (3) 3½" rectangles
- Sew together (1) 9½" piece and (1) rotated 3½" piece
- Press and Square up to 12½" if needed
- Repeat the above steps (5) more times
- Sew the blocks together 4 to a row, rotating direction
- Sew the rows together to make 4 rows
- Press the finished top.
- *You will have extra blocks. Please bring them to Community Outreach.

Quilting:

- Machine quilt a maximum of 4" apart.

SFQG Community Outreach Pattern



Garden Gate - Quilt Size: 48" X 48"

Fabric Required:

- A: (18) 2½"x39" strips of a medium or dark fabric
- B: (18) 2½"x39" strips of a light fabric
- Backing & Batting: 54" X 54"
- Binding: 207"

Assembly:

- Sew (6) strips of A to B alternating colors
- Press. This should be 12½" wide and at least 39" long
- Cut this into (3) 9½" rectangles and (3) 3½" rectangles
- Sew together (1) 9½" piece and (1) rotated 3½" piece
- Press and Square up to 12½" if needed
- Repeat the above steps (5) more times
- Sew the blocks together 4 to a row, rotating direction
- Sew the rows together to make 4 rows
- Press the finished top.
- *You will have extra blocks. Please bring them to Community Outreach.

Quilting:

- Machine quilt a maximum of 4" apart.