



Quiltlets are 8½-inch squares created by members and tied together to form a huge wall hanging that greets visitors at our biennial quilt show. We hope you'll contribute yours in time for our next show!



Please include the following information on the back of the quiltlet: your name, the year you joined the guild, the year you made your quiltlet, and, optionally, a few words about the block.

You can turn in your finished quiltlet to Anna Chan at any guild meeting.

By contributing a quiltlet, you'll earn one block credit that can be used in combination with your friendship block credits. Your quiltlet will remain the property of the guild. Feel free to contact Quiltlet coordinator Anna Chan with any questions; her contact information can be found in the Member Directory.

Directions for binding your quiltlet are on the next page.

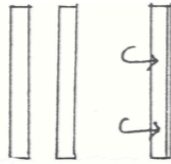
## HOW TO BIND YOUR QUILTLET

THE BINDING STRIP FABRIC CAN BE CUT ON THE STRAIGHT OR BIAS GRAIN.

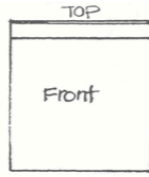
THE WIDTH OF THE FABRIC STRIP IS 2".

YOU NEED APPROXIMATELY 80" IN LENGTH TO BIND THE 8 1/2" UNFINISH SQUARE BLOCK.

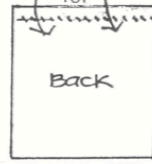
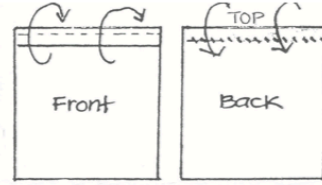
STEP 1.



Cut 2, 8 1/2" length binding strips. With the right side of fabric facing out, fold one strip lengthwise in half and press.



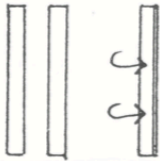
Pin the opened edge flushed to the front top of the block. Using 1/4" seam allowance, stitch through all thickness from end to end.



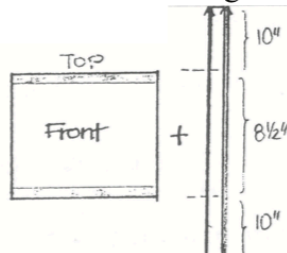
Flip the binding strip over to the back side and slip stitch in place to the back.

Repeat these steps with the other 8 1/2" binding strip to the bottom side of the block.

STEP 2.

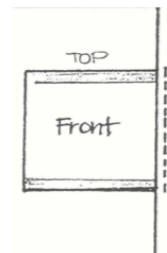


Cut 2, 28 1/2" binding strips. Fold one strip lengthwise in half and press.

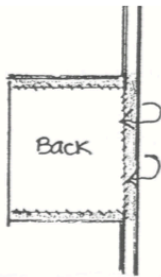


Allow about 10" of the strip to hang off each end of one side of the block.

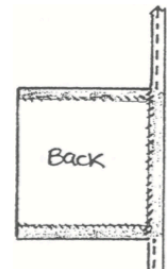
Pin the center binding strip with the opened edge flushed to the 8 1/2" side of the block.



Using 1/4" seam allowance, stitch through all thickness from end to end of the block.



Flip the binding strip over to the back and slip stitch in place.



To finish- hand or machine stitch to secure the folded strip that's hanging off the two ends.

Repeat these steps with the other strip to the opposite side of the block.

OPTION: You may machine stitch straight down the strips and bypass the slip stitch.

QUILTLET FINISHED SIZE: 8 1/2" square.

THANK YOU AGAIN FOR YOUR QUILTLET DONATION.