

Quilters Cables

San Francisco Quilters Guild – July 2011

Website: www.sfquiltersguild.org

Guild Contact: sfqq.info@gmail.com

President's Message

I've been to Paducah! As my mother, sister, niece and I continued our drive to New York and North Carolina, I had an unexpected surprise. After our last stop in Ashville, NC, I looked at the directions I had printed out weeks before and studied the map and saw that we would be passing right by Paducah, KY. Hopefully all you quilters recognize that name.

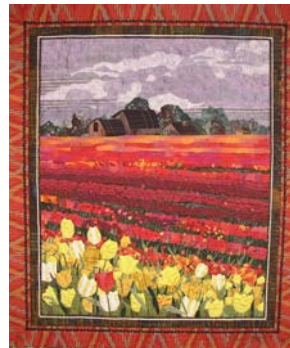
It's always been a magical place in my mind where only the best show their quilts. We had to stop. The National Quilt Museum exhibited about 80 quilts out of their collection of 300. Velda Newman and Cynthia Morgan were the featured quilters. Velda Newman will be teaching at our next Quilt Away, and I've had the pleasure of seeing many of her quilts at our local shows. Cynthia Morgan is from Australia. Many of her quilts are very earthy, taking her inspiration from the Australian Outback. There was an exhibit of miniature quilts, with some amazingly small squares. SAQA curated another special exhibit of art quilts. The main exhibit from the collection included the current winners from their April show along with quilts with examples of excellent piecing, quilting, design, and take-your-breath-away workmanship. I recommend a visit if you're in the neighborhood. Paducah in my mind was in a woodsy place, but in reality, it's a river town of 28,000 people at the confluence of the Tennessee and Ohio Rivers. They had quite a story to tell about their quilt show this year due to flooding. The conference center was outside of the floodwall, so they scrambled to move all the quilts, classrooms, etc. into temporary spaces and churches so they could put on the show. The size of the town doubles during the show.

May your summer continue to bring you inspiration for your quilts. I will miss the July meeting, but look forward to seeing you all in August.

Carol Munch, SFQG President 2010-2011

July 19 Meeting – Laura Fogg

Laura has been a quilt artist for ten years. She is self-taught, but has taken numerous painting and drawing classes at the local community college. Her quilts have been shown regularly since 2000, and awarded ribbons at many quilt shows across the US, including AQS shows, PIQF, and Visions in San Diego. Many of her pieces have been accepted into major gallery shows across the country, and have also been published in major quilting magazines in the US and abroad. Laura has been lecturing and teaching landscape collage classes for the past eight years bringing this wealth of landscape information to other quilters.



July Board Meeting

The July board meeting will be at Cher delaMere's house, at 1927 42nd Ave, San Francisco.

August 16 Meeting – Nancy Bavor



Certified Quilt Appraiser Nancy Bavor will go beyond describing the quilt appraisal process. She will also provide valuable information on quilt preservation, which will help us maintain quilts at their peak value.

Nancy has achieved the position of American Quilter's Society Certified Appraiser of Quilted Textiles, currently serves as an intern at the San Jose Museum of Quilts and Textiles, and is a masters degree candidate in history of textiles at University of Nebraska.

A quiltmaker, teacher and collector for 20 years, Nancy has held curatorial positions in two university museums, and has curated and exhibited in contemporary quilt shows.

Several of us had our quilts appraised by Nancy at the 2011 quilt show. Nancy will not have time to appraise quilts at the meeting, but will provide contact information for those of us seeking quilt appraisals.

The Sewcial Scene

Sunday, July 24, 2011 - 10 am – 4 pm

“Diamond Stars” with Pernille Gutschick

Got scraps? Pernille will teach you all the shortcuts for making this versatile pattern quickly as well as how to sew the units together accurately. Here's a wonderful quilt in which to use your scraps, fat quarters, or make it your stash-buster project. All levels. \$25.

Saturday, August 20, 2011 – 10 am – 4 pm

“Happy as a Clam” with Tish Chung

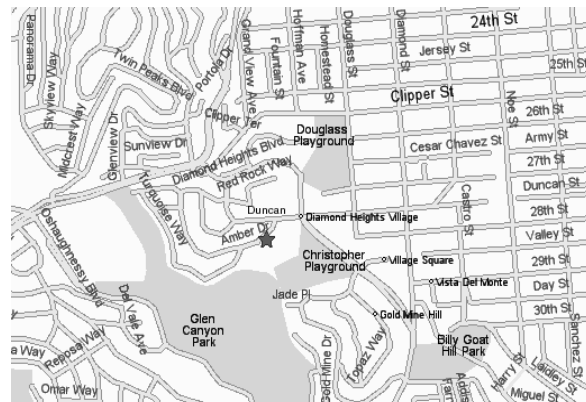
This class was so popular in May, there was a LONG waiting list, so Tish has been kind enough to agree to do another one. Always wanted to make a log cabin quilt? Here's a wonderfully versatile and pretty pattern — the clamshell log cabin — that can be sewn together easily, highlighting your collection of fabrics. You will learn how to organize your fabrics to show them off to advantage and how to make a block square. It's very addictive — you'll find you just can't make only one clamshell! Great for using any ethnic fabrics, fat quarters, or as a stash-buster project. All levels. \$25.

Please pay when you sign up in advance for Sewcials, or contact Pernille Gutschick (650) 572-2808. A supply list will be provided when you sign up. Arrive about 15 minutes before the start of the workshop (9:45 am) to set up and get directions so that we can begin on time. Please remember that there are no refunds for cancellations. For the comfort of all, please attend Sewcials “fragrance-free.” All sewcials are held at the San Francisco Police Academy. Map follows.

Directions to the Police Academy:

SF Police Academy
350 Amber Drive (near Duncan)
near Diamond Heights Safeway

Take SF Muni bus #52 or drive
your car, parking is free.



Quiltaway 12

Mark your calendar for our 12th Quiltaway scheduled for February 22 - 26, 2012. Most things are the same as last time and we will have more information in the coming months before we start taking reservations on October 1st. There will be an option of coming early on Wednesday for just \$115 more. We decided to make it easier on us by replacing the basket raffles and silent auction with vendors similar to the Quilt Show.

We now have a scholarship fund for Quiltaway and are building a simple and confidential process for application. Our goal is for all members who want to attend to be able to, so donations gladly accepted.

We can use your help on all the committees and we even need a chairperson for a couple of them.

Quiltaway 12 Committees:

Chair: Joyce Goode
Community Outreach Night: Sheila Salomon
Goodie Bags: Dottie McHugh
Morning Walks: Open
Mystery Quilt: Dani Lawler
Name Tags: Christine Tanabe
Quiltlets: Gloria Miller and her sewing circle
Registration: Joyce Goode
Scholarships: Dottie McHugh
Snacks: Open
Stretching: Joyce Goode
Treasurer: Sheila Salomon
Vendor Liaison: Cathryn Sherman

Are We in The "Golden Age" Of Quilting?

Submitted by Jeanie Low

A link to a last minute look at Columbia Ohio quilt show photos. <http://www.quiltingboard.com/t-131881-1.htm>

Block Of The Month

Will be drawn at AUGUST 2011 meeting
Christmas in August – makes one 12" finished block

That's right, Christmas in August. Three of these simple tree blocks are perfect to make a Christmas table runner, bell pull or wall hanging. We will group the entries into 3 blocks and draw a name for each group of 3. That means you have a 1 in 3 chance of winning! Imagine, if 12 people turn in blocks we will have 4 winners; if 30 people turn in blocks, **we could have a Show and Tell of 10 finished wall hangings at our November meeting.** You can embellish your Christmas Tree block with buttons, lace, packages, or other small items hand or machine appliqued (or press them in place with fusible web) or leave your tree "unadorned" and let the winner dress it up.

Tree Branches, Green

one 2-1/2" x 4-3/4" strip
one 2-1/2" x 7" strip
one 2-1/2" x 9" strip
one 2-1/2" x 11" strip



Background, Neutral (The tree is illustrated with a white background for clarity, but any tone on tone or smallish print will work.) **I often cut the background strips a little longer and trim the block to 12-1/2" after it is sewn.)**

two 2-1/2" x 4" strips
two 2-1/2" x 5" strips
two 2-1/2" x 6" strips
two 2-1/2" x 7-1/8" strips
two 2-1/2" x 5-1/2" strips – do not cut the corners on this size

Tree Trunk, Brown: One 2-1/2" x 2-1/2" square

All of the tree branches will have the corners cut at a 45°. Fold the strips in half and cut the ends diagonally at a 45° angle. For the background strips, cut only one end into a 45° angle. Be sure to place your cut strips face together before you cut the diagonal so one will fit on each side of the tree branch. Do not cut the corners on the 2-1/2 x 5-1/2 strips as these sew onto the trunk. Match the center of each strip as you sew it so the tree is balanced.

Sewing Instructions: Sew the longest pentagons onto both sides of the shortest (top) branch. Sew the second longest pentagons to the second longest tree branch and continue until all 4 branches have background fabric on each side creating a 2-1/2 x 12-1/2 long rectangles (strips). Press toward the tree branches. Sew the long strips together in order forming the tree. Sew the 5-1/2 inch strips on either side of the tree trunk. Sew this strip under the longest tree branch. Sew the 12-1/2 background strip on top. Add your name on a piece of paper pinned to the block so the winner knows who contributed to their Christmas delight

EVENTS CALENDAR

Submitted by Martha Schwarz

June 16 – July 31, Amy Ahlstrom, the Urban Quilter, and “Sampled Layers of Meaning”

a.Muse Gallery, 614 Alabama Street, San Francisco, CA 94110

a.Muse presents a vibrant show of ultramodern fiber art, influenced by pop, lowbrow and graffiti art, reflecting the urban experience. A public reception will be held Thursday, June 16, 2011 from 6:30 to 9:00 pm. Admission is free.

Through July 30 , Primal Green: Environmental Art Quilts

San Francisco Main Library, 5th Floor, Environmental Center Exhibit Space

Exhibit of art quilts created by the Contemporary Quilts and Fiber Artists group that represents each artist's unique approach to thinking about the environment, through use of unusual or recycled materials and abstract designs, stamping, painting and/or cutting fabric.

July 20 NCQC Presents: Meet the Teachers.

Wednesday 10-12 noon, Fairfield Community Center, 1000 Kentucky St., Fairfield, CA 94533

Info: www.ncqc.net

July 29-30 "Reno is Quiltown" Truckee Meadows Quilt Show. Sat. 9:30-5:30pm; Sun. 9:30-4:00pm

National Auto Museum in downtown Reno, 10 S. Lake Street, Reno, NV.

www.TMQilters.webs.com

July 29-31 International Quilt Festival, Long Beach

Long Beach Convention Center, S. Pine at Shoreline Blvd., Long Beach, CA

Classes begin & Preview Night Thursday, July 28. More info, www.quilts.com

For information and for advance printable tickets: www.quilts.com/newHome/index.php

July 29 – 30 Truckee Meadows Quilter presents "Quilts-n-cars"

National Auto Museum, 10th South Lake Street, Reno, NV

Hours: Friday 9:30-5:30; Saturday 9:30-4. Info: Peggy Wheeler at tmqnewspatch@yahoo.com

July 27 - August 14 Sonoma County Fair 75th Diamond Jubilee 2011

1350 Bennett Valley Road, Santa Rosa, CA

Celebrate for 17 days with live music, wine country racing, and see the largest Hall of Flowers which will be a tribute to the "best of the best" Flower Show from past years with a different theme every year. The Fair also presents displays of local arts and crafts. Closed on Mondays. info: www.sonomacountyfair.com

Monday, August 1 at 7:15pm San Francisco Giants v AZ Diamondback

Stitch & Pitch bring together two wonderful traditions - Baseball & the Needle Arts. The Giants' Annual tribute to the needle arts, Stitch & Pitch night is back, grab your project materials and come to the ball park for a fun night with your fellow crafters. With your purchase of this "special events" ticket, you'll receive a game ticket, with a seal in the "Stitch-N-Pitch" section of the ball park, as well as, a Giants themed project bag.

September 10-11 Harvest of Quilts, Elk Grove Quilt Guild, Sat. 10-5pm, Sun. 10-4pm

SES Portuguese Hall, 10428 E. Stockton Blvd., Elk Grove, CA, Beautiful quilts, wearable art, vendors, door prizes, & raffle baskets. Quilt drawing Sun at 3:00pm. Info: marciaquilts@comcast.net

What's Up With Sharon's Finger?

Submitted by Judy Woodfill

A non-quilting friend of mine sent me this story; thought you might all enjoy it! Several of you may know some of this story, but none of you may know it all, and I thought it was time to get everyone up to speed.

On April 8, I acquired a brand new, way too expensive sewing machine, a Janome 6600. This machine has some unbelievable features, most of which I'm still trying to understand.

On April 15 at 6 p.m., I was trying to retrieve a thread from the machine when the needle went down - right through my left index finger. As you can imagine, I was somewhat freaked out by this, but the needle was through my finger and I had to do something and quickly before I started to bleed on my cute embroidered kitty quilt. So needle up, and run to the kitchen for a paper towel to stop the bleeding. Sure enough there was a stitch in my finger - thread coming out both sides. Yep, 6 p.m. on a Friday night.

But the bleeding stopped quickly and it didn't hurt that badly, so I decided a trip to the emergency room was not needed. On Monday, called my doctor and after going through the "You what?" questions with the receptionist, I got an appointment that morning. The doctor put me on antibiotics and told me to soak the finger 3 times per day in hot water and come back on Thursday, hoping that the thread would just pull out by then. On Thursday, she said she had never seen anything like this and referred me to a hand specialist. Saw him this morning. He said that in 15 years he had never seen anything like this. Not trust-inspiring. He took an x-ray and determined that the needle had gone through the bone. So I'm going in for surgery on Thursday.

The doctor bills have not started arriving yet, but when they do, I'm sure the already expensive machine is going to become even more expensive. But, on a more positive note, I have finished 4 small quilts in the last 17 days!

Embroiderers' Guild of America

Submitted by Christine Anderson

Sample Bead Edgings & Techniques. Nov. 12 SF Workshop Registrations now accepted in next 6 weeks by sponsor SF EGA to learn from artist/author of 4 beading books Robin Atkins of Washington. Make a stitch sampler, learning all basic techniques for sewing glass accent & various seed beads to fabric, to yield high relief and textural variations. Atkins offers the fringing techniques that may embellish your next fabric creation; she's accomplished bead-embellished journals, quilt dolly sculptural pieces, framed art and enthusiastically lures you to meandering lines of beads & improvisational designs. Having judged beadwork and other art competitions, Robin's neat and appropriate finishing techniques often make the difference between a good piece and one with prize winning excellence. Details from SFQG/EGA member Christine Anderson, where workshop checks, \$70 plus \$8 kit, payable to SFEGA, with SASE can be mailed: 3327 Scott St., SF 94123-2013. sf_ega@earthlink.net

SFQG Meeting Information

- Meetings are held the third Tuesday of each month (except November and December which are held on the second Tuesday) at 7:15 pm at the Chinese 7th Day Adventist Church, 7777 Geary Boulevard (Entrance on 42nd Avenue)
- Guests pay \$5 admission, and all are welcome.
- Remember to bring: Library Books, Name Tag, Sew & Tell, Secret Pal Gift, Friendship Blocks, Block of the Month, coffee/tea cup.
- Board meetings are usually held the 4th Tuesday of each month at 7:00 pm at 155 De Soto Street, San Francisco.
- Saturday/Sunday Sewcials are generally held the Saturday or Sunday following the Guild meeting, from 10 am to 4 pm at the SF Police Academy, 350 Amber Drive, near Diamond Heights Safeway. Call Pernille Gutschick at 650-572-2808 for more information.

Library Call For Help

Submitted by Cher delaMere

I'm sure everyone has noticed how busy the library is during meetings. There is a need for someone to help with checking out materials to members, replacing cards in returned books and re-shelving at the end of meetings. If you are able to help with these tasks please contact either Cher delaMere or Dani Lawler.

NCQC Special Exhibit

NCQC is sponsoring a special exhibit, *New Quilts of Northern California*, at the Pacific International Quilt Festival October 13-16, 2011.

This is a great opportunity to showcase Northern California's quilting talent at a world class venue. We encourage you to enter or to pass this information on to fellow quilters.

The exhibit will be juried to 70 quilts which will be hung in the entrance to the show.

Entries are due August 8, and acceptance will be sent by September 10, 2011. Entry forms are available on the NCQC website www.ncqc.net. Click on the word "Forms".

It's That Time Again

Submitted by Cher delaMere

It is time to form a nominating committee to choose a slate of candidates for the elected positions of the Guild. Names must be presented at the July Board meeting and officers elected at the regular September guild meeting. Officers' duties are found in the bylaws at the end of the membership directory. The following are up for election or re-election:

PRESIDENT: Presides at all meetings of the Guild and is chairperson of the Executive Board which assumes an ability to speak in front of a large group. Appoints chairpersons of all standing committees; presents a written report of the work of the guild at its annual meeting in September and co-signs checks of the Guild. Also writes a monthly article for *Quilters Cables*.

VICE PRESIDENT: Presides and performs duties of President in that officer's absence; chairperson of the Program Committee which includes the selection of monthly speakers (to that end, it is preferable that this officer attend NCQC); and is authorized to co-sign checks of the Guild.

SECRETARY: Records the minutes of Special and Executive Board meetings and presents them at the following Executive Board meeting; in charge of any correspondence assigned by the Board and is authorized to co-sign checks of the Guild

TREASURER: Position filled by Gloria Miller. Thanks Gloria!

PARLIAMENTARIAN: Assures that the proper parliamentary procedure is followed at all meetings and chairs the Nominating Committee

If you entertain thoughts of filling any of these positions, wish to suggest a candidate, or can serve on the nominating committee, please contact Cher delaMere, Parliamentarian/Chairperson of the Nominating Committee.

Join Our Guild Or Renew Your Membership Now!

Membership runs from the beginning of October to the end of September. Just fill out the form on the back page, and turn in your check at the next meeting or drop it in the mail. Forms must be in by the end of December for inclusion in the Directory that is published in January. Mail membership checks, renewals, and changes of address to: SFQG, P.O. Box 27002, SF, CA 94127.

Newsletter Submissions

Please email news and event notices to Judy Woodfill. Call (415) 929-8283 if you have any questions. All submissions must be pre-edited. The deadline is the 1st Tuesday of each month. We accept advertising relevant to our membership. Ads will be approximately 1/8 page. Rate is \$20/month for SFQG members, \$25/month for non-members. A three month run is encouraged. Email information to quilterscables@gmail.com or jwoodfill@quiltwombat.com and send check to SFQG, P.O. Box 27002, San Francisco, CA, 94127.

Board Members

PRESIDENT: Carol Munch, (415) 508-9123 - carol@edniehaus.com

VICE PRESIDENT: Merrilyn Scott, (415) 892-1027

TREASURER: Gloria Miller, (415) 387-6508 - gloriamillersf@gmail.com

SECRETARY: Peggy Cleary, (415) 641-0493 - pegasusquilts@att.net

PARLIAMENTARIAN: Cher delaMere, (415) 596-1242 - Delamere.cheryl@gmail.com

COMMITTEE MEMBERS

Block of the Month Maren Larsen

California Heritage Quilt Project Rep.

Caroline Lieberman

Communications Chair Melissa Cardinet

Community Outreach

Sheila Salomon, Nancy Clock

Email Monitor Barbara Strick

Equipment Setup June Chen

Friendship Blocks Pat Knapp

Historian Jeanie Low

Hospitality

Alpha Gardner, Betty McNeil, Linda Gavin

Librarian Cher delaMere

Library Special Projects Dani Lawler

Mailbox Carol Munch

Membership Priscilla Der

Membership Database Dani Lawler

NCQC Representatives

Barbara Strick and Joyce Goode

Newsletter Calendar Martha Schwarz

Newsletter Editor Judy Woodfill

Newsletter Mailing Jane Yamada

Newsletter Proofing Karen Reiter

Opportunity Quilt 2012 Position Open

Photographer Nancy Clock

Quilt Show 2013 Position Open

Quiltaway 2012 Joyce Goode

Secwials Jeanne Matysiak, Pernille Gutschick,
and Mary Whalen

Secret Pals Joyce Goode

Sewing Circles Susan Schwarting

Website Manager Barbara Strick

AFFILIATES

Please patronize our affiliates. Discount policies for Guild members vary.

Dorcas Quilters

St. John's Presbyterian Church

25 Lake St., San Francisco CA 94118

(415) 751-1626

Eddie's Quilting Bee

480 South Mathilda Ave., Sunnyvale, CA 94086

(408) 830-955

www.eddiesquiltingbee.com

Fabric Creation

1846 26th Avenue, San Francisco, CA 94122

aminask@sbcglobal.net

Laura Lee Fritz

31 Glen Road, Novato, CA 94945

(415) 320-4369

lauraleefritz@aol.com

Fox Dreams Quilting & Design

Sue Mary Fox

Nov-April: P.O. Box 2171, Berkeley, CA 94702-0171

(510) 849-0908

May-October: P.O. Box 22, Eastport, Maine 94631

foxdreams@earthlink.net

Picket Fence Quilts

6090 B Redwood Blvd., Novato, CA 94945

(415) 892-8380

www.picketfencequilts.net

A Verb for Keeping Warm

6328 San Pablo Ave., Oakland, CA 94608

(510)595-VERB (8372)

Kristine@averbforkeepingwarm.com

New Pieces

Sharona Fischrup

766 Gilman Street, Berkeley CA 94710

(510) 527-6779

sharona@newpieces.com

www.newpieces.com

San Francisco Sewing and Quilting

Collaborative, Inc.

2189 Bayshore Blvd., San Francisco, CA 94123

(415) 656-1607

Stonemountain & Daughter Fabrics

2518 Shattuck Avenue, Berkeley, CA 94704

(510) 845-6106

www.stonemountainfabric.com

The Sewing Machine Place

239 Broadway, Millbrae, CA 94030

(650) 697-4739

www.thesewingmachineplace.com

Your California Fabric Connection

Contact: Terry Abblett

3445 Clayton Road, Concord, CA 94519

(800) 479-7906

www.YourCaliforniaFabric.com

P&B Textiles

1580 Gilbreth Road, Burlingame, CA 94010

(650) 692-0422

MEMBERSHIP APPLICATION

Membership Categories:

- Individual \$35.00
 - Senior (62 & older) \$25.00
 - Junior (up to age 18) \$25.00
 - Student (w/ valid ID) \$25.00
 - Newsletter only \$10.00
 - Affiliate \$50.00
 - Donation \$ _____
- Cash _____ Check # _____
- May we include you in our Guild Directory, published in January?
Please check only one: Yes No
 Name and phone number only
(Directory is for Guild use only)

Renewal _____ New Member _____

Name _____

Address _____

City _____

State and Zip _____

Phone _____

Email _____

Please check one:
I prefer to receive my newsletter by
email _____ or snail mail _____



SFQG, P.O.Box 27002
San Francisco, CA 94127